


MAP THE PROCESS.

SIPOC Process Mapping

May 26, 2021



1



Jim Floyd

IMEC Technical Specialist



2

Agenda



Overview of
process mapping



SIPOC Unwrapped



SIPOC
Demonstration

3



3

Overview | Topics



Value Stream
Mapping

What?
When?
Why?



Process Flow
Mapping

What?
When?
Why?



SIPOC

What? / When? / Why?
SIPOC Unwrapped
SIPOC Demonstration

4



4

Learning Outcomes



Value Stream Mapping

- What it is
- When to use it
- Reasons Why to use it



Process Flow Mapping

- What / When / Why



SIPOC

- What / When / Why
- How to use it

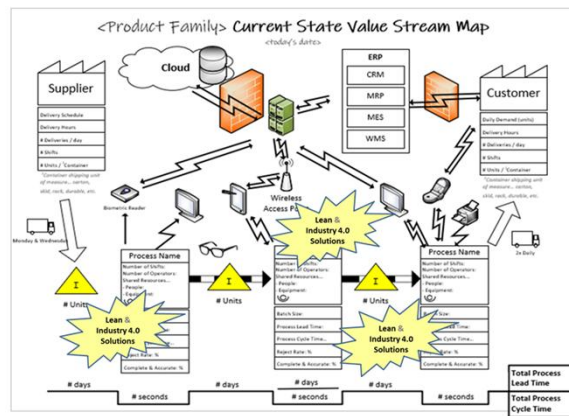
5



5



Value Stream Mapping



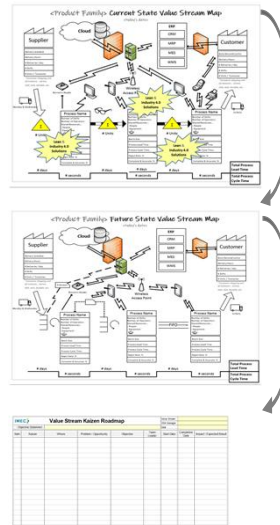
6

Value Stream Mapping | Overview

When to use it...

When?

- The organization is seeking to improve their processes from a systems perspective.
- There is no current value stream map / roadmap in play.
- The future state is achieved repeat the process.



9

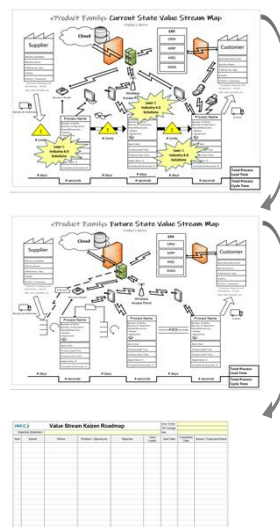
9

Value Stream Mapping | Overview

Why we use it...

Why?

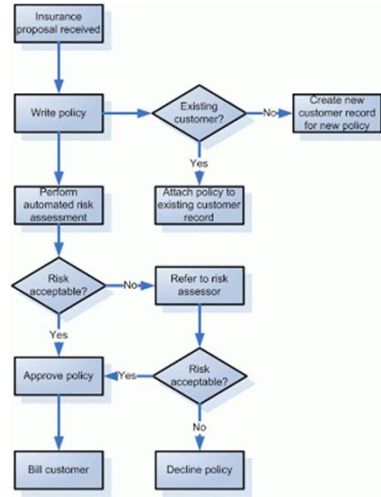
- The organization does not know where to begin with their continuous improvement initiatives.
- To improve material and information flow and eliminate / reduce waste.
- To deliver value to the customer with the highest degree of safety, quality, delivery, and cost competitiveness possible.



10

10

Process Flow Mapping



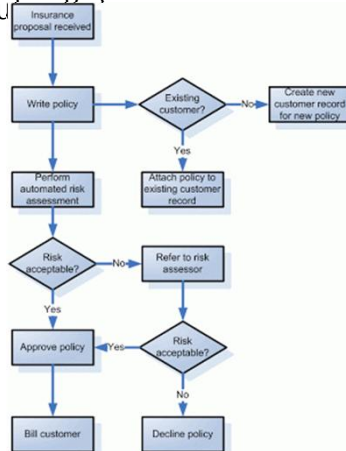
11

11

Process Flow Mapping | Overview

What it is...

Visual representation of a process and how the various steps of the process flow or the path(s) the process takes to produce an output.



12



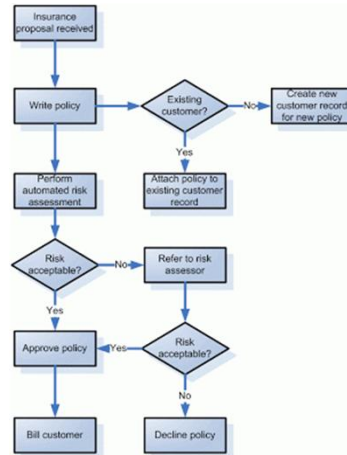
12

Process Flow Mapping | Overview

When to use it...

When?

- A problem needs to be understood.
- The current process changes
- New process
- To document the process for standard work and onboarding new team members.



15



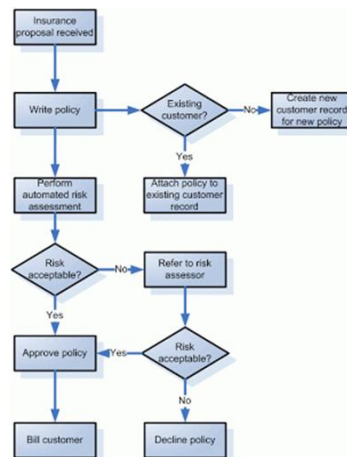
15

Process Flow Mapping | Overview

Why we use it...

Why?

- To document a process in a simple and visual manner.
- To understand a process and how the process flows.
- To determine the best process flow / best path to take to delivery a customer output.
- To communicate the current process for existing and new team members.

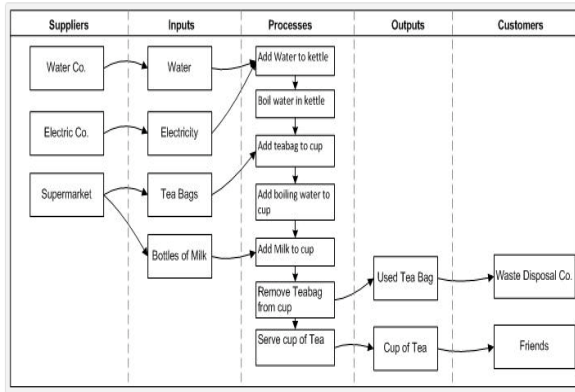


16



16

SIPOC



17

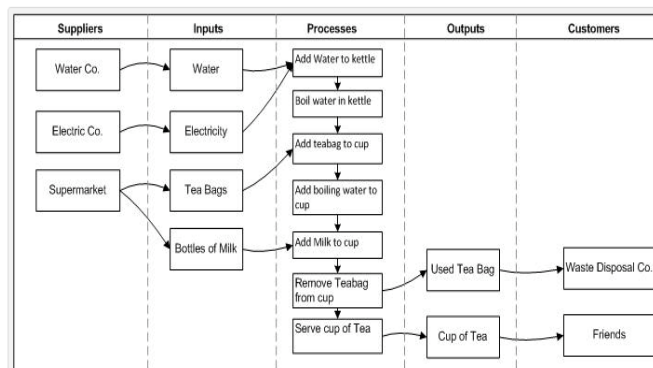
17

SIPOC | Overview

What it is...

SIPOC stands for...

Suppliers - Inputs - Process - Outputs - Customer



18

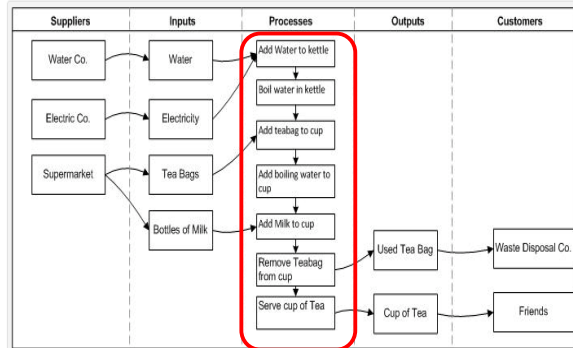


18

SIPOC| Overview

What it is...

Process Mapping practice to identify and understand **who** is supplying and **what** to each of the steps in a **process flow**, and what these steps are **outputting** and to **whom**.



- Process Flow Map
- Inputs / Outputs to / from each process step
- Suppliers of the inputs and Customers receiving the outputs



19

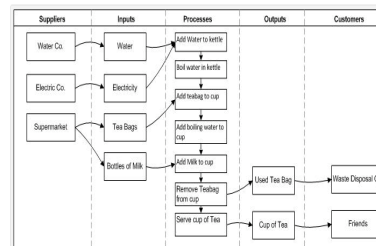
19

SIPOC| Overview

When to use it...

When?

- A problem needs to be understood.
- The current process changes
- New process
- To document the process for standard work and onboarding new team members.
- With Value Stream Mapping to understand the current state.



20

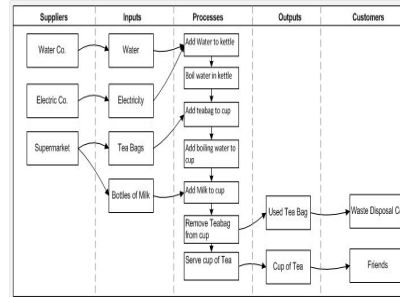
20

SIPOC| Overview

Why we use it...

Why?

- To document a process in a simple and visual manner.
- To understand a process and how the process flows along with what inputs / outputs and suppliers / customers.
- To determine the best process flow / best path to take to delivery a customer output.
- To communicate the current process for existing and new team members.

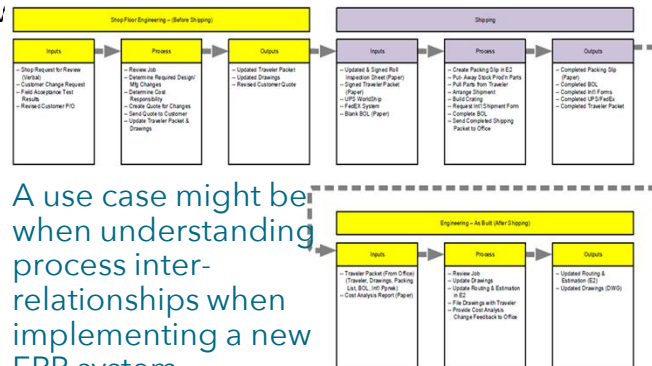


21

SIPOC| Overview

Why we use it...

A simplified version, an IPO (Input - Process - Output) can also utilized for all the reasons of the SIPOC but to, at a higher level, visually show the inter-relationships between v



A use case might be when understanding process inter-relationships when implementing a new ERP system.



22

22



SIPOC | How to Use It

Unwrapped

Demonstration



23

SIPOC | Unwrapped and a How to use it... Demonstration

We are going to create a SIPOC to understand all what goes into serving and delivering a single scoop of ice cream in a cone to a customer.

Where do we start?

We start with the process... by process flow mapping it!



24

24

SIPOC| Unwrapped and a How to use it... Demonstration

We are going to create a SIPOC to understand all what goes into serving and delivering a single scoop of ice cream in a cone to a customer.

We will be using a Microsoft Excel template for our demonstration. This, as well as the following white papers will be available for all who registered...

- *SIPOC Process Mapping for Value Stream Mapping*
- *Process Mapping Uncovered*

25



25

**PLAN.
 IMPLEMENT.
 EXCEL.**



26

The IMEC Process

By working alongside you to identify metrics for success, craft actionable strategies, implement new ideas, and evaluate their effectiveness – **Together we can drive innovation and excellence.**

The end result?

Plan for your future,
Implement strategies to get you there,
Excel to global competitiveness.



27



27

2020 Client-Reported Impacts



\$1,565,873

Aggregate New & Retained Sales



6,176

Jobs Created & Retained



1,144

Companies Assisted



79,640

Average Cost Savings



19:1

Return on Investment

\$646,455,900

Aggregate Impact to Illinois Economy

*Reported on annual NIST-MEP manufacturing survey




28

Thank You!

Q&A

IMEC.org

 jfloyd@imec.org or info@imec.org

 888-806-4632

