

IMEC: PREPARING MANUFACTURERS FOR ECONOMIC RECOVERY



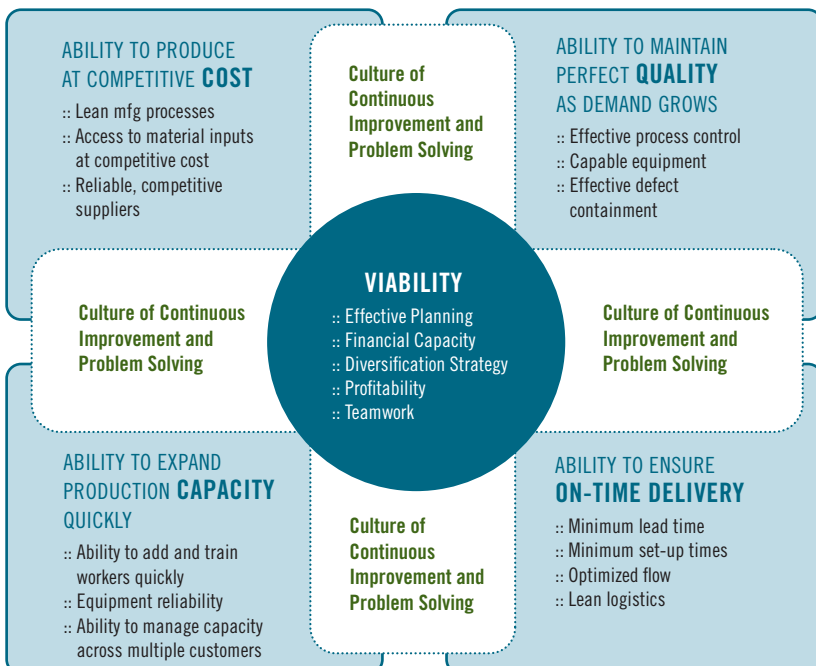
Illinois manufacturers continue to face enormous challenges as they rebuild from the recession. To stay in business, many companies reduced workforce levels, deferred maintenance on key equipment and delayed investments to improve operational effectiveness. Now, as demand increases, small and mid-sized companies in particular need help preparing to take advantage of the significant growth opportunities that will come with economic recovery.

To facilitate rapid response to Illinois manufacturers, the Illinois Manufacturing Extension Center (IMEC) has created the Recovery Growth Center.

Illinois manufacturers can and will recover from the worst recession since the 1930s. Unprepared companies, however, risk losing their customer base to competitors. Manufacturers who are prepared will expand their workforces more rapidly and help rebuild our state and national economies.

IMEC and our affiliated partners have the resources companies need to prepare for recovery and maximize their growth. **For information and assistance, contact IMEC at info@imec.org or call our toll-free number 888.806.4632.**

KEYS TO RAPID AND SUCCESSFUL RECOVERY



RECOVERY GROWTH SERVICES

EVALUATION - *Holistic review of a manufacturer's ability to capitalize on new opportunities*

- Financial readiness
- Equipment capacity and reliability
- Supply chain readiness
- Workforce availability and capacity
- Diversification readiness (markets, customers, products, distribution channels)
- Operational excellence (cost, quality, delivery)

RECOVERY PLANNING - *Prioritizing key gaps and developing action plans to address them*

- Constraint analysis
- Identification of resources needed to address prioritized constraints
- Development of cross-functional plan for rapid implementation

IMPLEMENTATION ASSISTANCE - *Helping companies overcome gaps and grow*

- Technical assistance to address key performance gaps/constraints
- Assistance helping companies evaluate their key suppliers' capability to respond to demand growth
- Assistance accessing federal and state funding where available
- Assistance linking to resources to help address expected workforce capacity gaps
- Services to help companies increase their market share and diversify
- Follow-on assistance to help companies maximize their growth and profitability

HOW PREPARED ARE YOU?

Take the FREE Recovery Growth self-assessment at www.imec.org/recoverycenter

